

The Village Voice

Celebrating our 10th year!

2855 Lincoln St., Eugene, Oregon 97405 Tel: 541-345-7285 Fax: 242-6874 village@4j.lane.edu eugenevillageschool.org

April 23, 2010 Volume 10, Issue 15

Calendar Events

April 2010

- 23 Fri—Deadline for **Summer School** applications
- 23 Fri—**6th Grade Play**; 7 pm
- 28 Wed—7th and 8th Grade **Track Meet**; 10-3 pm (see Page 4 for more details)
- 28 Wed—**Kindergarten Parent Meeting**; 6 pm. Parents are invited to bring as many greens and flowers as they can, so that we can fashion may flower crowns and baskets for the children.
- 30 Fri—**May Day Festival**; 11:45 am
- 30 Fri—**Race & Ethnicity Information Form due** (see Page 5 for details)

May 2010

- 3-7 Mon-Fri—**Teacher Appreciation Week**
- 4 Tues—**All School Photo**; 10:15 am
- 4 Tues—**8th Grade Class Trip Meeting**; 7-8 pm

The **Yearbook** group needs photos from this year's events. We're hoping to get supplies of photos from school wide events and class-related activities, plays and outings.

Media

It would help if you can put your photos on a CD or can temporarily lend us a thumb drive. Please, to the extent possible, provide us your original electronic files, and not compressed, low resolution, thumbnail versions. The small, compressed files do not enlarge well for printing. If you can, include a note of what you have on your CD or thumb drive, and your contact information.

Where to bring files

Please bring the files to the office or give them directly to Andy Traisman.

What Photos are Needed?

Class photos:

Misc photos from activities in the class or on class-specific events.

Events to date:

- Class Plays
- Eugene Celebration Parade
- Day of the Dead
- Talent Show
- Winter Concert
- Author's Night

Events to come:

- Dia de los Muertos
- Track Meet
- May Day
- Greek Games
- Class plays

May Day Festival

Please note there will be change in the timing of the May Day Festival! The event that takes place on Friday, April 30, will begin at 11:45 instead of 1:15 and will end at 1:15. Lots of flowers are needed. Please bring flowers if you can.

This month is National Volunteer Appreciation Month.

Thank you everyone who has helped make our school a better place with all that you do.

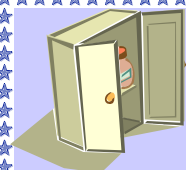
We appreciate you!

Please join us at our Annual Year-End Picnic (and Ten Year Anniversary Celebration) for our Volunteer Recognition Event.

Don't forget to log your hours in the office!

Caught Doing Good!

Vinodini Bennett for offering to organize Mr. T's classroom closet!



Annual Giving Campaign Update— We'd like to thank the parents, teachers, alumni, grandparents and friends of the Village School who have given so generously to this year's Annual Giving Campaign.

As of now we have accrued \$2,882.00 of our \$10,000 monetary goal. We are seeking 100% participation from our community.

Grade	<u>K</u>	<u>1</u>	<u>2</u>	<u>3</u>	<u>4</u>	<u>5</u>	<u>6</u>	<u>7</u>	<u>8</u>	<u>Board</u>	<u>Total</u>
% Participation	25%	14%	19%	21%	29%	4%	15%	17%	4%	20%	10%
Totals	\$175.00	\$325.00	\$45.00	\$140.00	\$655.00	\$30.00	\$152.00	\$260.00	\$1000.00	\$100.00	\$2,882.00

Announcements



The **Annual Village School Parent Survey** (not to be confused with the ODE Survey below) results are now in and available for anyone who would like to see them!



With the rainy season upon us, **it is a good idea to have an extra set of clothing in the building.** Please keep this in your child's classroom.

Oregon Department of Education requires all charter schools to participate in this annual survey. This survey is used to collect information that is reported to the USDE.

There are three parts to the survey – a staff survey, a parent survey and a student survey. No log-in is needed and the survey is online. It is located at: <http://www.ode.state.or.us/surveys/default.aspx>

Many of you have done a good job of getting your surveys complete... if you have not yet done so, please take the time to get this done.

The information from this survey helps ODE in grant reporting, reports to the State Board of Education, media requests and legislative and other partner requests and has been used to further the charter school movement from all avenues.

RESULTS can be found at:

http://www.ode.state.or.us/opportunities/grants/nclb/title_v/b_charterschools/surveyresults/charterschools.aspx

The survey will remain open until June 15, 2010, in order to facilitate your schedules. Please notify the office after your family has completed the survey -Tel: (541) 345-7285, Fax: (541) 242-6874, Email: village@4j.lane.edu. It will remain anonymous, but we would like to track that each family is completing it. We would like to demonstrate a high percentage of participation and, as always, we value your feedback. If you are unable to access the Internet, pencil and paper copies are available in the School office. Please stop by and complete the survey and a volunteer will input the data on to the website.

The Village School Board of Directors is actively recruiting volunteer members!

The Board consists of the School's administrator, teachers, parents, and community members. It meets every third Tuesday of the month. The meetings usually take place at the School but refer to the weekly newsletter on our website: <http://www.eugenevillageschool.org> for the location of the meetings in case of change.

Meetings are open to the public. Parents and community members are welcome to attend.

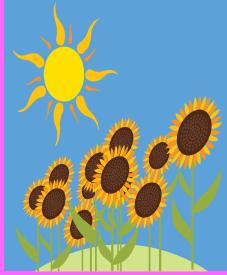
If you or someone you know may be interested, please complete an application. If you are not interested in becoming a member, but know of a family or community member who might be, please let them know we are recruiting by sharing this information.

Board of Directors Job Description at a Glance

The Village School Board of Directors has ultimate legal and financial responsibility for the school. The Board is composed of teachers, parents, and community members. Primary Board responsibilities include maintaining the legal and financial security of the school, long-range planning and development, and creating and overseeing the implementation of policies and procedures of the school that are consistent with the school's pedagogy, community vision, and its charter. The Board elects a President, Secretary, and Treasurer from among its members. All Board members are encouraged to participate in the major committees of the school.

Announcements, cont'd

A big part of the **May Day Festival** is fresh flowers. Anyone that is able to contribute fresh flowers for this event, please drop them off at your child's classroom either the day before or the day of the festival.



Our May Day Festival is from 11:45 am—1:15 pm on Friday, April 30th.

Reminder about early release

When picking their children up early, parents need to sign their students out in the office first and take an early release pass to the teacher so that the teacher knows the student has been properly signed out before they leave campus.

Ballot Measure 68

Statewide primary election ballots should arrive in registered voters' mailboxes in early May and are due to election offices by May 18. **Please vote!**

Ballot Measure 68: How would it impact schools?

Ballot Measure 68, referred to the ballot by the Oregon Legislature, would amend the Oregon Constitution to allow Oregon public school districts to use bond proceeds to buy land and other assets, and would create a state matching fund to help finance school district capital costs.

Would allow schools to use bond funds for more capital costs

Measure 68 would broaden how Oregon school districts can use bond proceeds. Districts could use voter-approved bonds to buy land, furniture, equipment and textbooks and pay costs associated with capital projects such as professional fees.

Would allow state to match local capital improvement bonds

Measure 68 would allow the state to issue general obligation bonds and use the revenue from these bonds to pay some capital costs for local school districts. Oregon school districts with voter-approved capital bonds could receive state matching funds, lowering local costs for the project.

Currently, the state can issue general obligation bonds to help finance state university and community college capital costs. Measure 68 would add public school districts to that authority.

The measure would prohibit repaying the state bonds by raising property taxes. Rather, it would dedicate 15 percent of state lottery revenue to the school capital matching fund to repay state funds provided to districts. According to the state voters' pamphlet statement*, the measure would have no financial effect on either state or local government expenditures or revenues.

* Source: *Measure 68 ballot titles and explanatory statements, "Oregon Voters' Guide for May 18, 2010, Primary Election"*

Announcements, cont'd



FOURTEENTH ANNUAL OREGON WALDORF SCHOOLS TRACK AND FIELD MEET

Wednesday, April 28, 2010 – 10 AM to 3 PM at South Eugene High School

Our purpose is to have an introductory track and field experience to test our physical capacities, to improve our fitness and skills, and to have a lot of fun together. Why is this event so important? This is the time of life for these students where they are beginning to recognize that their destiny and future is in their hands. How much they receive from this and any experience is largely due to the attitude they bring to the activity. There is a tendency at this age to be a little more passive in their choices. Their bones are heavy, their bodies are growing quickly and it can just feel better not to move so much. Gravity wants to have control. So the physical curriculum centers around group activity that allows them to be challenged socially as well as physically. They are ready to challenge themselves to become better. We as the adults provide the guidance and encouragement to participate fully in everything that they do.

The competition is not school versus school (except on relays). Ribbons will be given to 1st, 2nd and 3rd place finishers in each event immediately after each event, thus eliminating a time consuming award ceremony.

Several Oregon Waldorf schools will be participating at this event hosted at South Eugene High School.

EVENTS: Each athlete will choose a minimum of 4 events to participate in that must include both track and field events. The athletes will only be competing against other athletes of the same grade and gender and skill level (ie. 8th grade beginner girls will only compete against other 8th grade beginner girls).

Field events include: discus, long jump, shot put, high jump, and javelin.
Running Events include: 100 Meter, 1600 Meter (1 mile), 400 Meter, 800 Meter, and 4 X 100 Relay.

FOOD: Students should bring their own lunches and plenty of water. A snack of fruit, granola bars and beverages will be provided at the event.

GEAR TO BRING: Students will need to bring shorts, t-shirts, sweats, rain gear, towel, extra socks, water bottles, hat, cover shirt, and sunscreen. We will supply Village School t-shirts to compete in.



This year we will work with Oregon Green Schools to attempt to make it a waste-free event!

Announcements, cont'd

Fundraising

Please join us in our fundraising efforts!

Register your debit/credit cards with **eScrip** and a small percentage of your purchases go to the Village School! You can register either online or by mail. For more information on E-Scrip please pick up a flyer and registration form outside the Administration office. Our Group ID is # 9130886.

Order **Café Mam Coffee** through us (order Tuesday, have your coffee Wednesday).

Buy Student Art **Greeting Cards** (beautiful Village School artwork for \$1.00).

Donate **Campbell's Soup Labels** to get some free items for our school; the container is placed above the family mail boxes.

Hungry? We also have weekly **bake sales and pizza sales** for our eighth grade graduation field trip.

If you are interested in helping to coordinate fundraising efforts for the school or being part of a committee, see Ashleigh in the office.

Bridging the Gap

Help us "Bridge the Gap" to raise \$10,000 for the Village School field trip budget, school supplies, and to purchase student desks.

You can make a donation to the Village School's Annual Giving Campaign with the following options:

Check – Make your check payable to "The Village School." Mail it to The Village School, 2855 Lincoln St, Suite B, Eugene, Oregon 97405 or drop it off at the school office.

Matching Gifts – Some employers match gifts. If your employer has a form, it can be mailed to the same address as direct donations (see above).

Credit Card – To donate using your credit card you will be forwarded to the website of the non-profit *Network for Good*, where your gift (and any earmarks you make) will be recorded.

Direct Donation from your bank account – You can set us up in your Bill Pay preferences through your online banking institution. Once you set up Bill Pay just select a one-time payment or a recurring automated monthly payment for your donation. If you have questions please call your bank and ask which is the best option for you.

Your gift is fully tax-deductible to the degree allowed by law.

Race & Ethnicity Information Form

With the new federal reporting requirements for race and ethnicity going into effect, a letter was placed in each of your family mailboxes asking you to update your child's records. Families are asked to return the forms to the office by April 30th.

29th and Willamette Intersection Construction Notice

The City of Eugene is reconstructing the roadway in the area of Willamette Street and 29th Avenue. The existing road surfacing will be removed and replaced with new concrete. The work will occur in 4 phases, each lasting approximately 2 weeks. During construction, traffic will be reduced to a single lane in each direction, and the signal will be replaced with a 4-way stop. Access to local businesses will be maintained throughout construction. Work is scheduled to begin in the later part of April and last approximately 10 weeks.

Village School Volunteers Needed

After School Supervision: There has been a consistent pattern of unsafe behavior outside the entrance doors after school. When picking up our child(ren), please remind the children that students are not to hang from the hand rails, play tag in front of the doors or stand on the ramp ledges. This reminder is mainly needed from 2:45-3:00 PM.

Crosswalk Cones have been purchased! We need someone to put them into place before school and to bring them into the building after school.

Crossing Guards: Mon-Fri: 8:10-8:30 AM & 2:30- 2:50 PM.

Flower Pick Up: We need someone to pick up flowers from Trader's Joe's and bring them to our school on Tuesdays and/or Thursdays.

Playground Helpers Needed: Supervision on the playground during lunch time is needed for both the upper wing and lower wing. This is a great time to get some volunteer hours and you don't have to commit to a certain time or day! Lower grades have recess from 12:00 – 12:30 PM and upper wings have recess from 12:45 – 1:15 PM.

Recycling Bins: The large BLUE recycling bins that sit outside the wings entrance doors need to be brought out to the curb each FRIDAY afternoon and returned to their spots MONDAY afternoons... if you take notice of them; please feel free to take them to their designated spots!

Repairs needed for Desk Chairs: We need someone with some extra time to screw on new seats to some of our student desk chairs. We'll supply the screw driver if you can supply the hands and time!

Trash Police: Please keep your eye out for people illegally dumping their trash in our dumpsters, bins, and on our lawns. We would like to keep our school clean! If you see a license plate, please write it down. Thanks.

Don't forget to log your Volunteer Hours!

Village School Dress Code

The Village School Dress Code exists to assure that students are prepared to safely and comfortably participate in all the activities of a normal school day. A typical day at the Village School will include many different kinds of physical activities for which it is necessary that children are appropriately clothed. Therefore, clothing should always accommodate the active child and should include outerwear appropriate for prevailing weather conditions. We ask that families consider the following:

Outside play is a part of the daily school routine. Students who come to school properly attired for outdoor activities and in clothing that allows for freedom of movement will be best able to fully participate in and enjoy outdoor activities in all kinds of weather. Warm and/or waterproof clothing for cold or rainy days as well as proper wet weather shoes are a must.

Footwear that allows for freedom of movement and protects the whole foot is essential. Sneakers or athletic shoes best accommodate Movement classes as well as the many indoor and outdoor activities that occur throughout the school day. Flip-flops and shoes that do not cover the back of the foot are strongly discouraged. **Shoes with wheels in the heels are not permitted.**

Moderate jewelry may be worn. Dangling earrings can pose a safety hazard. Students will be asked to remove large earrings during Movement classes or during any other activity where they might pose a safety or health hazard. For similar reasons, we ask that students do not wear chains or spikes to school. It is a good idea for all children to keep a change of clothes at school.

In the interests of the School's intrinsic aesthetic values, we make the following requests regarding choices of attire:

- We appreciate neatness!
- We seek to avoid clothing that is distracting or provocative. Positive imagery on clothing in the form of logos or other graphics and that is minimally commercial is acceptable. **We will not allow violent imagery or advertisements of illegal substances on campus.**
- While sleeveless shirts may be worn to school, skimpy tops that expose waists, cleavage, and backs such as halter or cropped-tops are unacceptable. All underwear must be completely covered. Transparent/see-through clothing may not be worn to school.
- Skirts, shorts and skorts are acceptable as long as they allow freedom of movement without exposure. A good rule of thumb is that the hemline be no higher than the tips of the fingers when the student is standing with arms down at their sides.
- Pants and shorts should be in good condition and should fully cover underwear. Baggy, saggy trousers that expose the top of one's undergarments are unacceptable.
- Natural looking make-up may be worn in moderation by Middle School students.

Consequences for Non-compliance with the Dress Code

- Children who arrive at school dressed inappropriately will be asked to change into alternative clothing that is available in classrooms and in the office.
- In cases of repeated non-compliance, parents will be contacted and asked to bring a change of appropriate clothing to school for their student(s).

We ask that families honor and respect the Village School Dress Code. The need for continuing and frequent reminders to students to act respectfully and to comply with the Dress Code can have a negative and erosive effect on student-teacher/administrator relationships, ultimately undermining the educational process. Parents, please discuss the Dress Code with your student(s) and check in with them before you leave your homes in the morning to be sure that their choices of attire are in line with the School's aspirations to ensure a safe, respectful and comfortable learning environment.

Current trends and fads will be addressed as they arise. The teachers have discretion to determine whether their students are in compliance with the Village School Dress Code. On occasion under special circumstances, teachers may communicate additional requirements with regard to student attire. We acknowledge that dress is an expression of style and culture. To the extent that they do not inhibit a child's free and safe engagement in school activities, cultural practices around dress and jewelry will be honored.

We invite community engagement in upholding a climate of respect and non-discrimination. We ask that parents and students consider the impact that language or imagery may have on others and that we all pledge to honor the highest level of sensitivity of the members of our community. We recognize that what may seem innocuous to one person may be highly offensive to others.

"The healthy social life is found when in the mirror of each human soul the whole community finds its reflection, and when in the community the virtue of each one is living."

-Rudolf Steiner